

Parts Change Notice

Model No. EY7410-X8 <Correction for S/M PTD0609X39AE>

Model No. EY7411 <Correction for S/M PTD0703X33CE>

Please revise the original parts list in the Service Manual to conform to the change(s) shown herein.
If new part numbers are shown, be sure to use them when ordering parts.

Reason for Change		*The circled item indicates the reason. If no marking, see the Notes in the bottom column.
1. Improve performance		
②. Change of material or dimension		Make more smooth movement of tact switch
3. To meet approved specification		
4. Standardization		
5. Addition		
6. Deletion		
7. Correction		
8. Other		

Interchangeability Code		**The circled item indicates the interchangeability. If no marking, see the Notes in the bottom column.
Parts	Set Production	
Ⓐ Original	Early	Original or new parts may be used in early or late production set. Use original parts until exhausted, then stock new parts.
New	Late	
B Original	Early	Original parts may be used in early production sets only. New parts may be used in early or late production sets. Use original parts where possible, then stock new parts.
New	Late	
C Original	Early	New parts only may be used in early or late production sets. Stock new parts.
New	Late	
D Original	Early	Original parts may be used in early production sets only. New parts may be used in late production sets only. Stock both original and new parts.
New	Late	
E	Other	

Part Number					
Model No.	Ref. No.	Original Part No.	New Part No.	Notes(***)	Part Name & Descriptions
EY7410	33	WEY7410K2007	WEY7410K2008	*2, **A	SWITCH
	44	WEY7410K3059	WEY7410K3052	*2, **A	HOUSING AB SET (for Europe)
	44	WEY7410K3050	WEY7410K3053	*2, **A	HOUSING AB SET (for Oceania)
EY7411	32	WEY7410K2007	WEY7410K2008	*2, **A	SWITCH
	47	WEY7411K3059	WEY7410K3051	*2, **A	HOUSING AB SET (for Europe)

[Phenomenon] Does not activate on reverse side when bending the main body.

[Cause] There is a slight possibility to happen this phenomenon caused by either dispersion of operation force on tact switch, inequality of right and left side of slope inside of switch handle, and pinching tact switch lead wires in between housing.

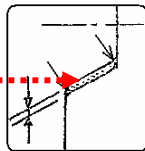
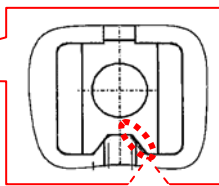
[Measure] The dimension of Switch handle and Housing A was changed from the production in April 2011.

For this phenomenon, replace measured 'Housing AB Set' and 'Switch' together.



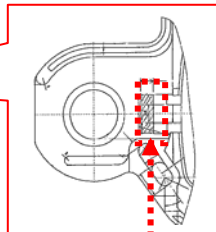
Switch Handle

Adding 0.1 ^{+0.02} ₋₀
to equalize
right and left side



Housing A

Enlargement from 3.3mm
to 5.0mm with the same
depth.



File this Parts Change Notice with your copy of the Service Manual.